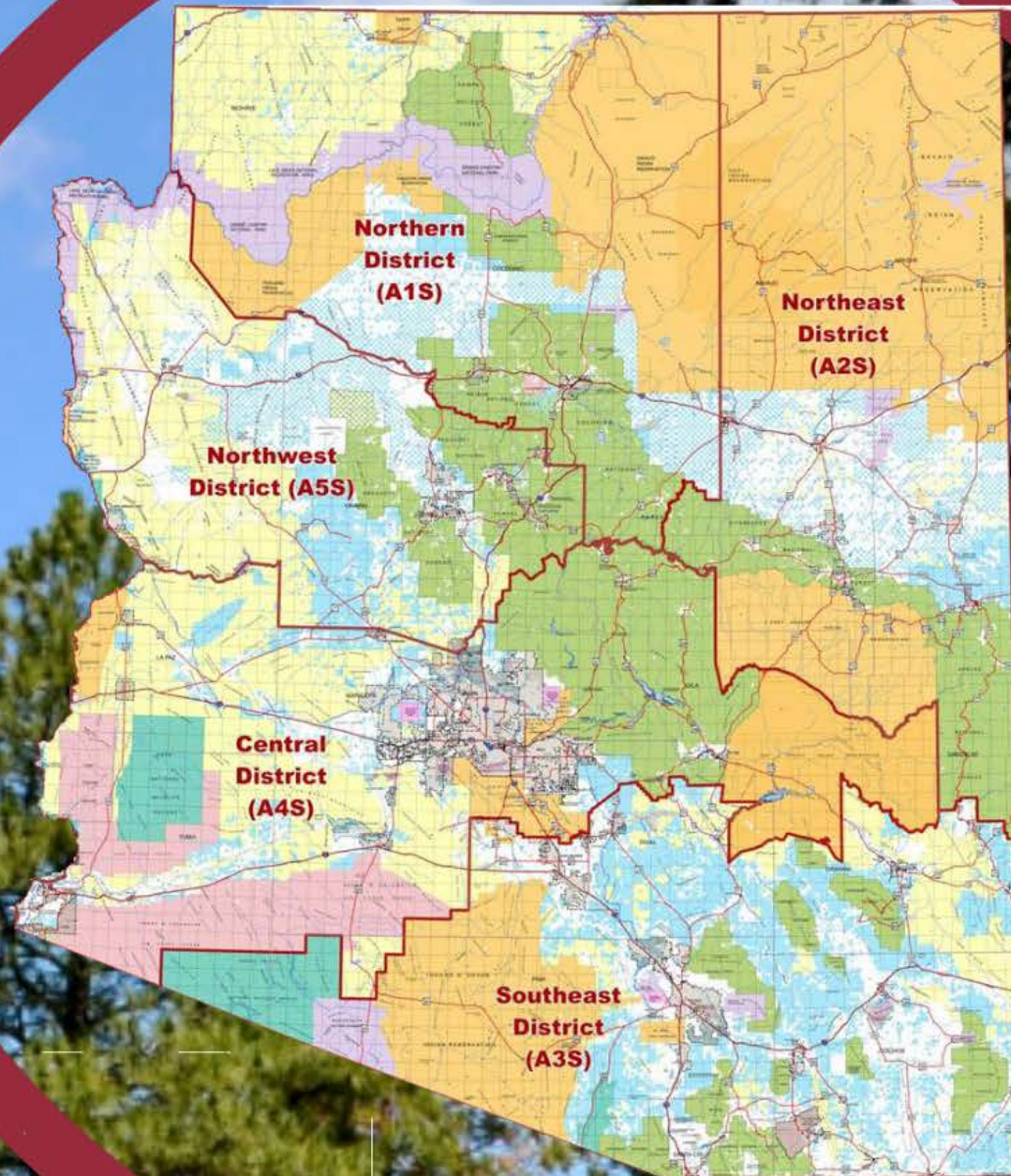




Arizona Department of Forestry and Fire Management



# A1S



District Name: Northern District (A1S)

Size: 15,314,000 acres

Counties: Coconino, Northern Mohave

Communities: Flagstaff, Sedona, Williams, Belmont, Parks, Munds Park, Page, Fredonia, Colorado City, Clints Well, Blue Ridge, Doney Park, Mountaineer, Kachina Village, Sherwood Forest Estates, Tusayan, Woods, Kaibab Estates West, Clear Creek Pines, Mormon Lake, Happy Jack, Junipine, Beaver Dam, Little Field, Peach Springs and Camp Navajo Army Depot.

Coordinate with Grand Canyon National Park, Flagstaff Area Monuments, Coconino National Forest, Kaibab National Forest, BLM Arizona Strip District, Hualapai Reservation

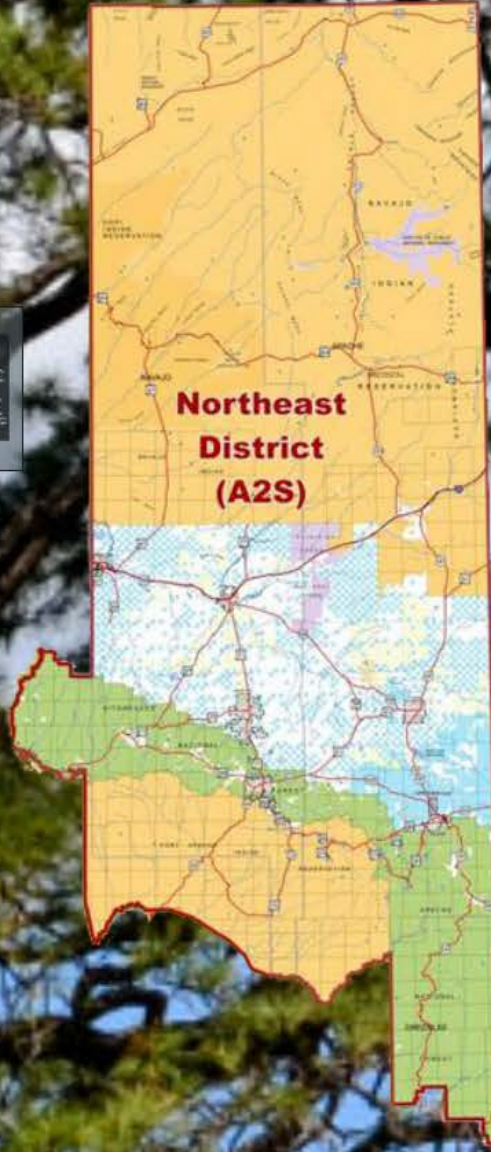
State and Private Programs: A1S has engaged in Stewardship, Legacy, Forest Health Insect and Disease Flights, WBBI grants, SFA grants and WFHF Grants in the area. We make Federal Excess Property available to cooperators and assist local jurisdictions with wildland fire training. 2016 A1S also provided Basic Wildland Fire classes and Saw Classes to the Students at NAU. A1S is also strong Collaborators in the 4FRI Stakeholders Group, the Flagstaff Watershed Protection Project, Greater Flagstaff Forest Partnership and the Arizona Natural Resource Working Group. A1S has 4 full time foresters working to treat State Trust and Private lands through a variety of funding sources. In FY 2017 we targeted 1,550 acres of mechanical forest treatments and 510 acres of hand thinning per year. Strong relationships with the Kaibab National Forest to do hazardous Fuels work and the Hualapai Reservation account for more than \$350,000 worth of work over the past 2 years. Emphasis in future years will be to expand our prescribed Fire program on both State and Private ground.

Fire Load: A1S has two type two crews and one full time engine boss and a seasonal engine crew that can utilize either a new type 6 engine or a quality Federal Excess type 3 engine. Fire seasons vary with annual moisture but the potential for large catastrophic in the area is high with the Shultz fire and the Slide fire being two recent examples of type 1 fires in the District

2016 A1S 84 incidents 52 fires 348.42 acres

A2S

Copyright 2014 by the State of Texas  
All Rights Reserved  
This map is a reproduction of the original map  
published by the State of Texas in 1998.  
The original map is available for purchase  
from the State of Texas. The original map  
is available for purchase from the State of Texas.  
The original map is available for purchase  
from the State of Texas. The original map  
is available for purchase from the State of Texas.



District Name: Northeast District (A2S)

Size: Approx. 16,381,440 acres

Counties: Apache, Coconino, Gila, Navajo,

Communities: Heber/Overgaard, Pinedale/Clay Springs, Linden, Show Low, Wagon Wheel, Lakeside, Pinetop, White Mountain Lakes, Taylor, Snowflake, Holbrook, Winslow, Joseph City, Sun Valley, Corizzo, Perco Valley, St. Johns, Concho, Vernon, Springerville, Eagar, Nutrioso, Alpine, Greer, McNary, Whiteriver, Hondah/Indian Pines, Window Rock, Ganado, Eagle Creek, Carrizo, Cibique

State and Private Programs: FireWise/Prevention, Forest Health, Urban Community Forestry, Fire Suppression

Fire Load: For state and unincorporated private the typical fire load is light to moderate, since most of the communities lie in the PJ or grasslands. The fire load for the National Forest and Ft Apache is much higher due to the heavier timber fuels. Each agency may experience 75 – 100 ignitions in a day during the monsoons. Both the Rodeo/Chediski and the Wallow fires, Arizona's two largest wildfires, burned within the A2S district.

A3S



Map of the Southeast District (A3S) showing various colored regions and geographical features. The map is overlaid on a background of green pine trees. The map is enclosed in a large red circular border. The map itself is divided into several colored regions: a large yellow region on the left, a large cyan region in the center and right, and smaller green, purple, and brown regions scattered throughout. The map includes labels for 'Township of Orange' and 'Township of Orange' (repeated), and 'City of Orange'. The text 'Southeast District (A3S)' is printed in bold black letters in the center of the map. A small legend box is located at the bottom left of the map area.

District Name: Southeast District (A3S)

Size: 15,976,138 Acres

Counties: Cochise, Graham, Greenlee, Pima, Pinal, Santa Cruz

Communities: 150

State and Private Programs:

Sentential landscape REPI program

A3S Programs but not limited to: Hazard Fuel Reduction, Grants, Habitat Restoration, Watershed management, Range Improvement, Firewise, Legacy, Stewardship, Urban Forestry, Tree City USA, Champion Trees, Prevention Programs, Forest Health, Smokey Bear Program, Invasive Species Management, Department of Correction collaborations of Type 2 wildland fire crew, collaborations with environmental and conservation groups (e.g. The Conservancy, Water land and trust, Sierra Club, AZ Antelope Foundation, Sky Island Alliance, Malapai Border Group, Altar Valley Conservation Alliance)

Fire Load: Per Dispatch - WildCAD

2016: 496

From 2009-2016 there were 1653 fires in A3S with an 8-year average of 206 fires



A4S



**Central  
District  
(A4S)**



Small legend box containing text, likely describing map features or data sources.



District Name: Central District (A4S)

Size: Approx. Million acres

Counties: Gila, Graham, La Paz, Maricopa, Pima, Pinal

Communities: Avondale, Buckeye, East Valley Cities, Gila Bend, Globe, Payson, Phoenix Metro, Pine/Strawberry, Wickenburg

State and Private Programs: Fire, FireWise, Urban and Community Forestry

Fire Load: 119 incidents in 2016

A5S



District Name: Northwest District (A5S)

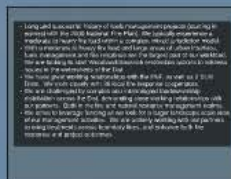
Size: Approx. 9.5 Million acres

Counties: Mohave, Yavapai

Communities: Kingman, Prescott, Verde Valley communities

State and Private Programs: Fire, Stewardship, Forest Health, Urban and Community Forestry

Fire Load: 53 State jurisdiction fires in 2016



- Long and successful history of fuels management projects (starting in earnest with the 2000 National Fire Plan). We typically experience a moderate to heavy fire load within a complex, mixed jurisdiction model.
- With a moderate to heavy fire load and large areas of urban interface, fuels management and fire response are the largest part of our workload. We are looking to start Woodland/Savannah restoration actions to address issues in the watersheds of the Dist
- We have great working relationships with the PNF, as well as 2 BLM Dists. We work closely with 36 local fire response cooperators.
- We are challenged by complex and intermingled landownership distribution across the Dist, demanding close working relationships with our partners. Both in the fire and natural resource management realms.
- We strive to leverage funding as we look for a larger landscape scale view of our management activities. We are actively working with our partners to bring treatments across boundary lines, and enhance both fire response and project outcomes.



Arizona Department of Forestry and Fire Management